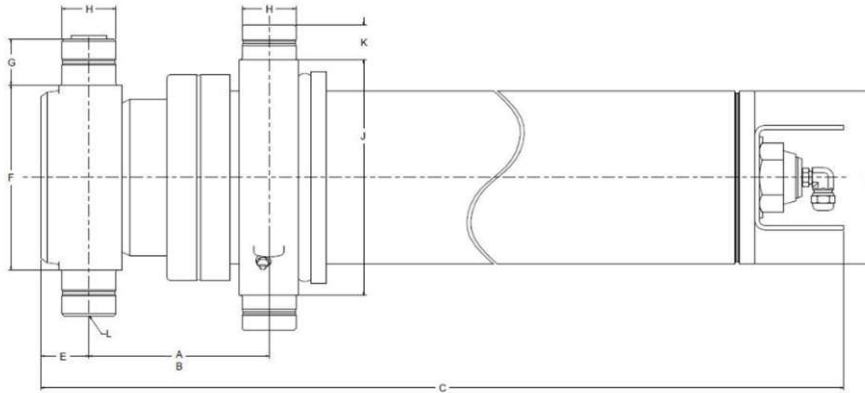


Technical information

Dimensions

Imperial

Metric



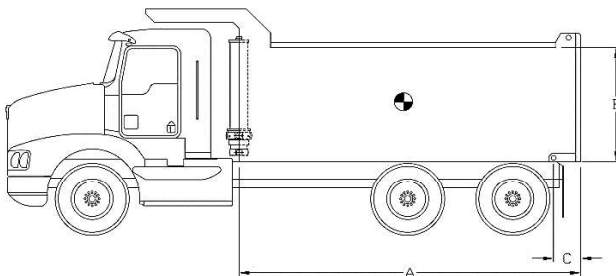
A (stroke)	126.88 in	3 223 mm
B (closed)	7.63 in	194 mm
C	59.69 in	1 516 mm
D	7.50 in	191 mm
E	2.00 in	51 mm
F	8.00 in	203 mm
G	2.00 in	51 mm
H	2.25 in	57 mm
J	10.18 in	259 mm
K	1.50 in	38 mm
L	SAE-16	
M		
N		

Stage	Effective diameter		Effective area		Stroke	
1	6.063 in	154 mm	28.87 in ²	18 627 mm ²	42.25 in	1 073 mm
2	5.250 in	133 mm	21.65 in ²	13 966 mm ²	42.43 in	1 078 mm
3	4.500 in	114 mm	15.90 in ²	10 261 mm ²	42.18 in	1 071 mm

Specifications	Imperial	Metric
Weight without hydraulic fluid	421 lb	191 kg
Hydraulic fluid volume	14.6 gal. (US)	55 l
Maximum working pressure	2 500 psi	172 bar
Maximum pump flow ext. (retract)	40 gpm (7 gpm)	151 lpm (26 lpm)
Cylinder design limit capacity*	37.1 US tons	33 657 kg

Installation components	Model	Part no.
Block	B-2250	PB3005003-A
Frame	AC-4040	PF3000014
Hinge	P-200 PEL-T	PP3004010

Cylinder capacity



A = Body Length
 B = Body height
 C = Overhang

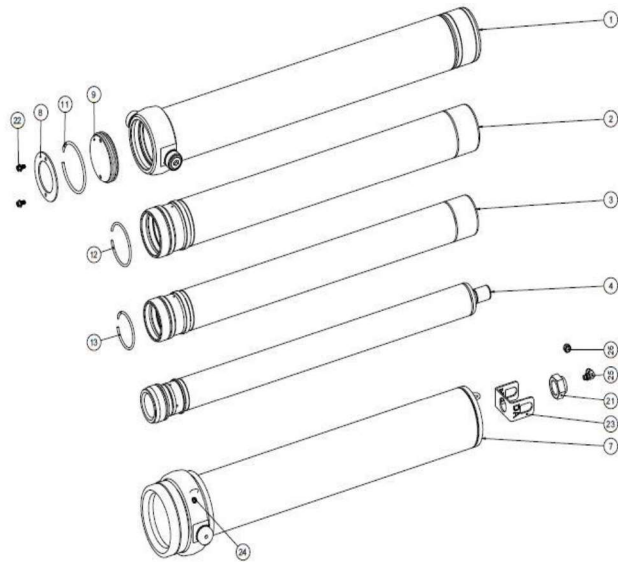
Note:	Body length	13.0 ft		14.0 ft		15.0 ft	
Cylinder capacities based on 90% of the maximum working pressure.	Overhang	0 in	6 in	6 in	12 in	12 in	18 in
	Dump angle	48.2°	50.3°	46.3°	48.2°	44.6°	46.3°
	Body height	Capacities for different box length configuration in US tons at 2000 psi (at 2500 psi)					
For reference only. See www.mailhotindustries.com	36 in	37.4 (46.8)	40.4 (50.4)	38.2 (47.8)	41.1 (51.4)	39.1 (48.8)	42.0 (52.5)
	48 in	39.6 (49.5)	43.1 (53.9)	40.3 (50.4)	43.8 (54.7)	41.1 (51.4)	44.5 (55.6)
	60 in	42.1 (52.6)	46.3 (57.9)	42.7 (53.4)	46.8 (58.5)	43.4 (54.2)	47.4 (59.2)

* See product manual

Subject to change without notice, all rights reserved.

Item	Part no.	Description
------	----------	-------------

1	ROVD061018-A	BASE TUBE Ø6.7
2	RMGD057173-A	SECTION Ø5.7
3	RMGD050272-A	SECTION Ø5
4	RNVD040081-A	LAST SECTION Ø4
7	RK075150-A	COVER TUBE ASSEMBLED
8	RFG062008	END CAP Ø6-1/4
9	RFG062009	END CAP Ø6-1/4



Snap ring kit Part no. : XB19G0573

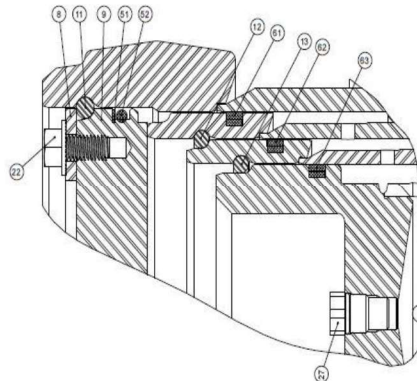
Item	Description
------	-------------

11	SNAP RING Ø6-3/16
12	SNAP RING Ø5-1/4
13	SNAP RING Ø4-1/2

Hardware kit Part no. : ZX02G0573D

Item	Description
------	-------------

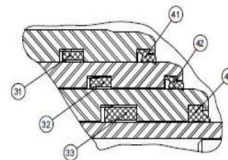
21	STOVER NUT 1-3/4-12 UNF GRADE C
22	SERRATED FLANGE HHS GRADE 5 Ø3/8-16 UNC X 3/4 LG
23	PROTECTOR
24	GREASE FITTING STRAIGHT 1/8 NPT
25	ELBOW ADAPTER 90° SAE ORB TO 37° FLARE
26	CAP NUT SAE 37° FLARE Ø3/4-16
27	RELIEF VALVE PRESET 3200 PSI (3000-3500 PSI)



Seal kit Part no. : UI47G0573D

Item	Description
------	-------------

31	UCUP Ø6.170 X Ø5.795 X 3/8
32	UCUP Ø5-3/8 X Ø5 X 3/8
33	UCUP Ø4 X Ø4-1/2 X 9/16
41	WIPER Ø5.795
42	WIPER Ø5
43	WIPER Ø4
51	BACKUP RING Ø5-3/8 X Ø5
52	O-RING Ø6-1/8 X Ø5-3/4
61	PISTON RING Ø6-1/16
62	PISTON RING Ø5-1/4
63	PISTON RING Ø4-1/2



* See product manual

Subject to change without notice, all rights reserved.